

# UR-W376C

**UR-W376C features a six-section hydraulic boom to allow a maximum hook height of 14.9m.**

The middle size UNIC mini-crawler crane can be operated either from the onboard operator seat or from a distance using a remote control. Its class-leading boom length of 14.61m brings wide working radius and excellent lifting height.



**Max 14.9m**  
Hook height (Approx.)  
(Above ground level)

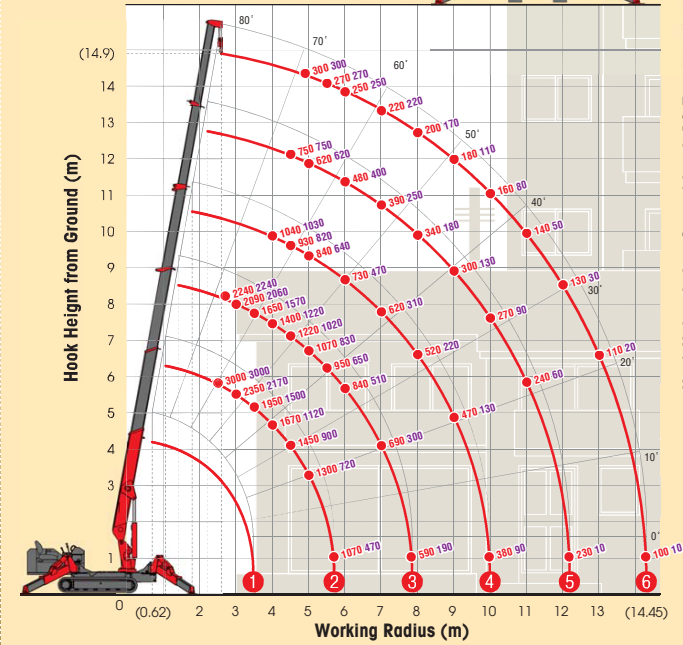
**Max 3.03t**  
×2.5m  
Lifting capacity

**Max 14.45m**  
Working radius

**3860kg**  
Mass of crane

## WORKING RANGE & NET RATED LOADS (kg)

Outrigger ● Max-extended NOT max-extended



Three colored lamp



Digital load meter



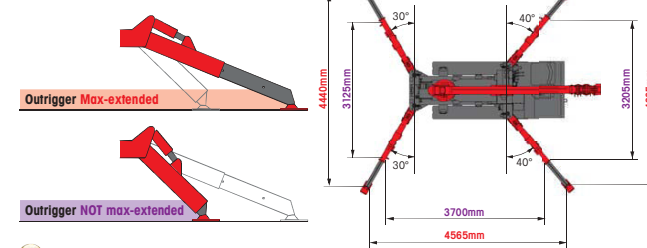
with electric power unit



## SPECIFICATIONS

Crane model	UR-W376CD
Lifting capacity	Max. 3.03t at 2.5m
Working radius	Min. 0.62m, Max. 14.45m
Hook height (Approx.)	Above ground level: Max. 14.9m Below ground level: Max. 18.7m with 4-part line
Length	Min. 3.63m to Max. 14.61m
Boom	Extending speed: 10.98m / 23.0 sec. [50Hz] 10.98m / 40.0 sec. [60Hz] 10.98m / 33.5 sec. Raising angle / speed: 0° to 80° / 10.0 sec. [50Hz] 0° to 80° / 18.0 sec. [60Hz] 0° to 80° / 15.0 sec. Structure: 6-section box beam type telescoping boom
Winch	Single line speed: 68.0m / min. (at 4th layer) [with electric power unit] [50Hz] 34.0m / min. (at 4th layer) [60Hz] 40.0m / min. (at 4th layer) Hook speed: 17.0m / min. at 4th layer with 4-part line [with electric power unit] [50Hz] 8.5m / min. (at 4th layer with 4-part line) [60Hz] 10.0m / min. (at 4th layer with 4-part line) Structure: Hydraulic motor driven, spur gear reduction, with automatic mechanical brake and wire rope retaining roller Wire rope: Construction: NIRC 6 x WS(26) GRADE B / Diameter x Length: 8mm x 85.0m / Breaking strength: 42.4kN (4320 kgf) Hook block: 3.00t capacity, 2 sheaves with safety latch
Swiveling	Range: 360° continuous rotation on a ball bearing race Speed (with electric power unit): 2.5 rpm [50Hz] 2.1 rpm [60Hz] 2.5 rpm Structure: Hydraulic motor driven, worm gear reduction, spur gear reduction, and worm self-locking brake (supported by ball bearings)
Outriggers	Horizontal / Vertical: A double acting hydraulic cylinder, direct pushing type (Directly connected with hydraulic automatic lock device) Type: Variable delivery piston pump Rated pressure: 21.6 MPa (220 kgf/cm²) Rated delivery: 60 liters/min Rated revolution: 2500 rpm
Hydraulic pump	75 liters
Hydraulic oil tank capacity	Pressure relief valve for hydraulic circuit / Counterbalance valves for boom raising and boom telescoping cylinders / Pilot-operated check valves for outrigger cylinders (Horizontal) Double pilot-operated check valves for outrigger cylinders (Vertical) / Boom angle indicator with load indicator / Hook safety latch / Automatic mechanical brake for winch Automatic stop for overwinding / Overwinding alarm / Automatic stop for leaving minimum wire rope / Emergency stop button / Inter-lock device of crane and crawling levers Inter-lock device of crane and outriggers / Level / Automatic stop for overloading / Load meter / Digital load meter / Three colored lamp / Headlight
Safety devices	

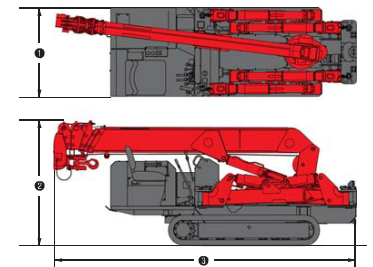
## OUTRIGGER POSITIONS



## CRAWLING GEAR

Crane model	UR-W376CD
Crawling speed	0-3.0 km/h, forward / backward [with electric power unit] [50Hz] 0-1.3 km/h [60Hz] 0-1.5 km/h
Hill climbing ability	23°
Tread length	1750mm
Ground contact pressure	36.3 kPa [0.37 kgf/cm²] [with electric power unit] 37.3 kPa [0.38 kgf/cm²]
Engine manufacturer / model	Yanmar / 3TNV76
Displacement	1115cc
Maximum output	16.17kW(20.6PS) / 2500 rpm, Rated output
Fuel	Diesel
Fuel tank capacity	40 liters
Steering	Hydraulic drive independent of left / right
Starter	Starter motor

## DIMENSIONS



Crane model	UR-W376CD
① Total width	1300mm
② Total height	1800mm
③ Total length	4340mm
Mass of crane	3860kg [4010kg] [with electric power unit]

## Electric power unit specifications

Rated power	7.5kW (3-phase 4 poles)
Voltage	AC 200V or 400V (50Hz / 60Hz) 3 phase 4P